



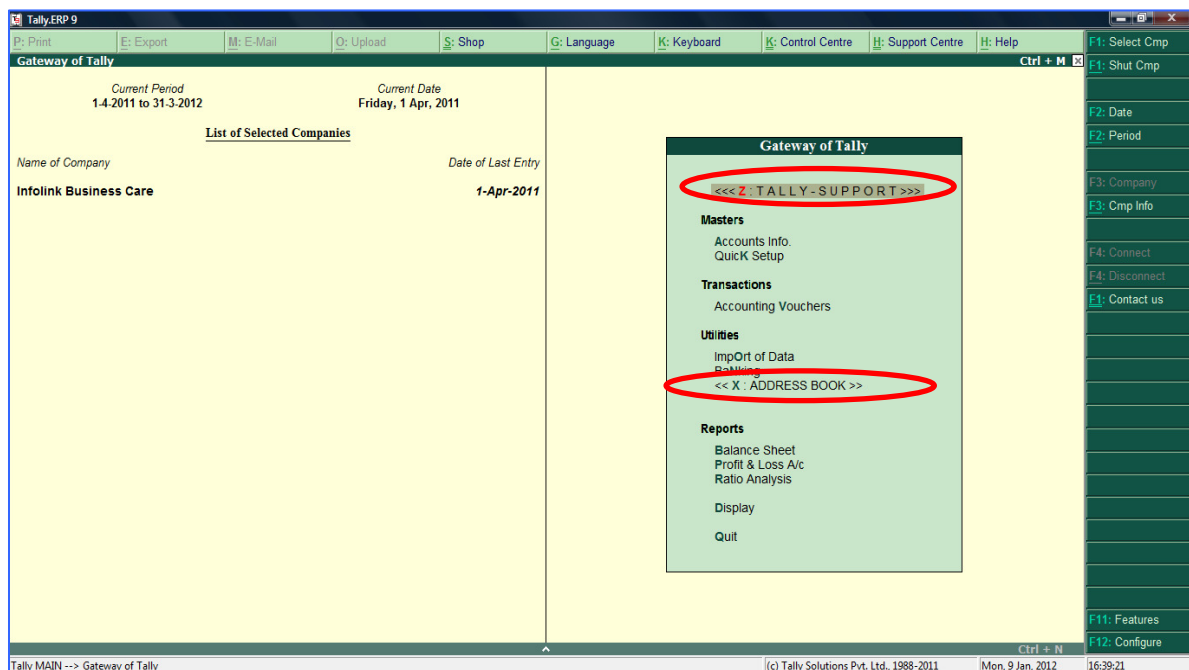
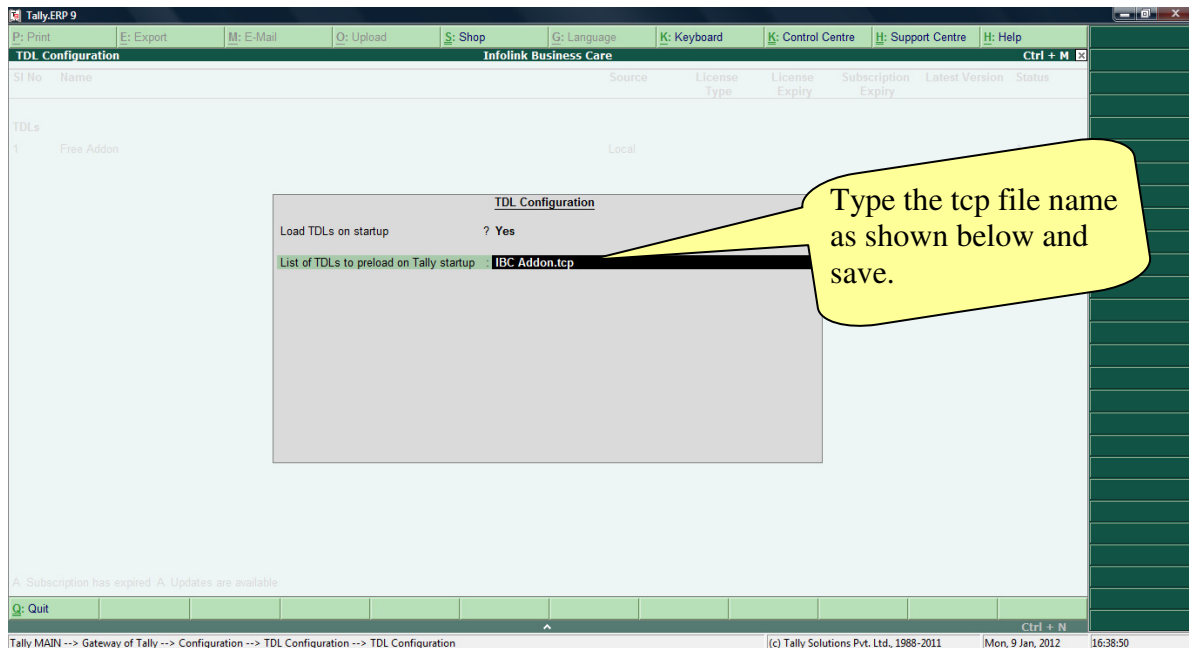
Infolink Business Care

Tally Sales - Support - Training - Customization
Implementation - Integration - Synchronization



Steps to enable the Address dairy Module in Tally:

1. Copy the downloaded TCP file and paste it in the Tally folder.
2. From Gateway of Tally -- Press F12 → TDL Configuration → F4 → "Yes" for *Load TDLs on Startup* option and type the name as indicates below.



For assistance please contact our help line at 080-65356555.